



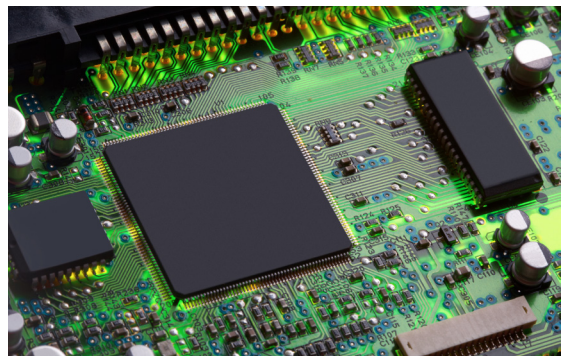
## Skived PTFE Films Standard

Saint-Gobain offers a broad range of Skived Films. These films are manufactured from high quality virgin PTFE resins or PTFE compounds and are designed to meet applications with the highest operational requirements. Full in-house processing includes mixing, moulding, sintering, skiving, sodium-ammonia surface treatment and slitting as well as IATF 16949 and ISO 9001 certifications guaranteeing consistent high product quality.

Skived Standard PTFE Films are commonly used in applications with general requirements, such as release, non-stick or low friction surfaces as well as chemical protection.

One of the biggest benefits of Skived Standard PTFE Films is the combination of different properties at the same time, e.g. outstanding chemical resistance, excellent release and dielectric properties and a broad service temperature range.

To complement the product offering a bondable version is available (best-in-class etching on one or both sides).



- Tank liners
- Elastomer Laminates
- Gas & Liquid tight barrier in compensators and expansion joints



- Release material for electronics



- High frequency circuit boards
- Wire & cable especially in high temperature and sensitive equipment



- Low friction & anti-squeak in automotive

Typical Properties	Thickness [mm]	Surface tension, etched surface [mN/m]	Tensile Strength** [N/mm <sup>2</sup> ]	Elongation at break* [%]	Filler content [% by weight]	Appearance/ Color
O10S Standard-PTFE	0.025 - 3.0	N/A	≥ 20	≥ 200	None	White
O10SE Standard-PTFE, etched	0.025 - 1.5	≥ 45	≥ 20	≥ 200	None	Brown**
Test Method	-	DIN ISO 8296	DIN EN ISO 527 v = 50 mm/min microtensile specimen (according to ISO 13000)	DIN EN ISO 527 v = 50 mm/min microtensile specimen (according to ISO 13000)	Thermal Gravimetric Analysis	-

#### ADDITIONAL PROPERTIES Applies to all materials

Density* [g/cm <sup>3</sup> ]	2.13 - 2.19	DIN EN ISO 1183-1
Surface finish [µm]	R <sub>t</sub> ≤ 10	DIN EN ISO 4288
Dielectric breakdown strength [kV/mm]	40 - 100	ASTM D-149 thickness 0.05 - 0,5mm
Ball indentation hardness 132/60*** [N/mm <sup>2</sup> ]	28	DIN EN ISO 2039-1 thickness min 4mm
Coefficient of friction****	0.07	

#### FEATURES & BENEFITS

- High purity due to usage of highest quality resins
- Continuous service temperature up to 260°C
- Superior etching for improved bondability
- Excellent dielectric properties
- Low friction combined with excellent release properties
- Very high insulation properties for electrical applications
- Extremely tight tolerances
- Outstanding, almost universal chemical resistance

#### AVAILABILITY

Skived Standard PTFE Films are available in widths up to 1700 mm and thickness down to 25 µm. A variety of standard dimensions is always available and kept in stock. Please contact the factory for further information, slit widths and minimum order quantities. Special thicknesses, widths or other requirements are available upon request.

Performance tests are run using standard test procedures. The values presented are typical values and should not be used for specification purposes. Special requirements (e.g. thickness or color) are available. All values, except surface tension, are measured on non-etched film/laminate with a thickness of > 0.1 perpendicular to molding direction.

\*Standard values according to ISO 13000 PTFE semi-finished products grade 2

\*\*On etched side

\*\*\*Raw material manufacturer data

\*\*\*\*Ball on Disc, Ø=6mm, v=10mm/s, F<sub>N</sub>=2N, t=2h

IMPORTANT: It is the user's responsibility to ensure the suitability and safety of Saint-Gobain products for all intended uses and that the materials to be used comply with all applicable regulatory requirements. Saint-Gobain assumes no responsibility for any product failures that occur due to misuse of the materials it provides arising out of the design, fabrication or application of the products into which the materials are incorporated.

WARRANTY: For a period of 6 months, Saint-Gobain warrants this product(s) to be free from defects in manufacturing. The only obligation under any applicable product warranty will be to replace any portion proving defective, or at our option, to refund the purchase price thereof.

SAINT-GOBAIN DISCLAIMS ALL IMPLIED WARRANTIES OF MERCHANTABILITY AND FITNESS FOR A PARTICULAR PURPOSE.

© Saint-Gobain 2021 | PLDS.SPTFES(SI).0321.EU.F&F | CHEMFILM is a registered trademark of Saint-Gobain.



**Saint-Gobain Films & Fabrics  
Europe**

Am Nordkanal 37  
47877 Willich  
Germany  
Telephone: +49(0) 2154 60 407

[www.films.saint-gobain.com](http://www.films.saint-gobain.com)